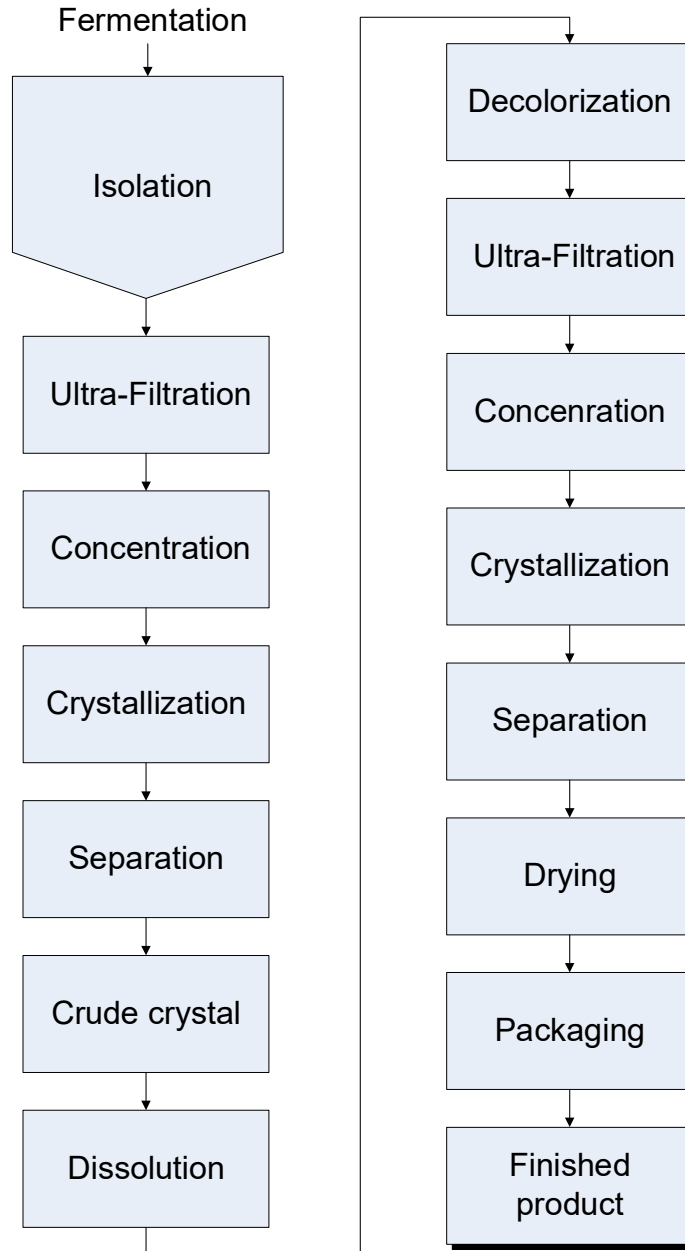


## Manufacturing Process Flowchart

### L-Lysine Monohydrochloride, USP, JP, bioCERTIFIED™ – L9800



#### CORPORATE HEADQUARTERS

769 Jersey Avenue

New Brunswick, NJ 08901

PHONE 732.214.1300

FAX 732.246.7132

#### WEST COAST FACILITY

14422 South San Pedro Street

Gardena, California 90248

PHONE 310.516.8000

FAX 310.516.9843